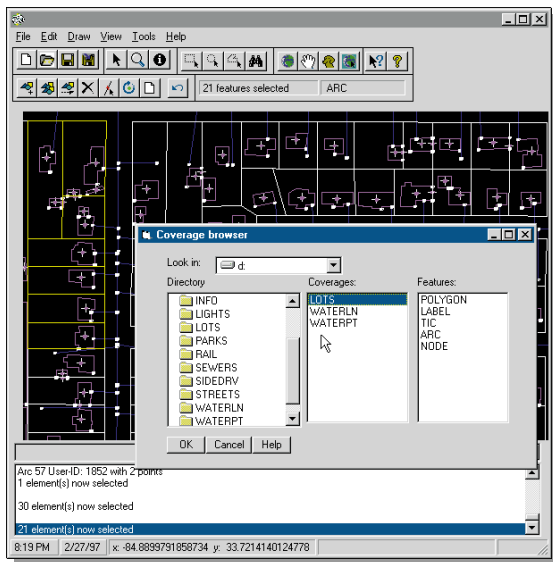


# A R C / I N F O

O P E N



The Open Choice for GIS

*Open Development Environment*

*Open Data Management*

*Open Data Support*

*Open Platform Support*





# ARC/INFO Opens

## Open

### OPEN DEVELOPMENT ENVIRONMENT

ARC/INFO users and developers will find that all of the components and engines in Version 7.1.2 are engineered for use with standard programming tools, allowing ARC/INFO to be embedded within a non-GIS application and applications to be written using industry-standard development languages.

Windows NT functionality will be callable via OCXs using

- Visual Basic®
- PowerBuilder®
- Delphi®
- Visual C++®

UNIX functionality will be available as shared libraries (.so) for development environments such as

- C
- Tel/Tk
- Motif®
- C++

## Open

### OPEN DATA MANAGEMENT

New technology will provide a single point of entry for all ESRI software to access ARC/INFO data in various settings:

- Traditional coverages
- ARC/INFO LIBRARIAN™ tiles
- ArcStorm databases
- Server support for ArcStorm on Windows NT
- Multifeature checkout
- ARC/INFO client to SDE Version 3.0

Version 7.1.2 will include a layer that compiles split features and reconciles tiles to enable seamless reading of data sets from ArcView GIS Version 3.x and MapObjects software.

### Building on Two Decades of Tradition

ARC/INFO® geographic information system (GIS) software, used by thousands of organizations around the world, helps integrate maps and databases into useful information for better decision making. Businesses, governments, utilities, and educators worldwide rely on ESRI® software to improve operational efficiency, increase profitability, and tap the true potential of their databases.

### A Solid Technology for Today and Tomorrow

Today the world is converging on the desktop with standard development environments and open data standards. ESRI, always at the forefront of keeping GIS technology in step with the real-world needs of its users and developers, is not only introducing powerful new features in ARC/INFO Version 7.1.1 and 7.1.2, but unveiling an extraordinary new direction that will make the world's best GIS software work with the world's best programming tools.

### What's New Right Now

This exciting new direction takes shape in Version 7.1.1, with new tools for both UNIX® and Windows NT® platforms. This release introduces ARC/INFO as a client to Spatial Database Engine™ (SDE™). And ARC/INFO can now display and query ArcView® GIS shapefiles!

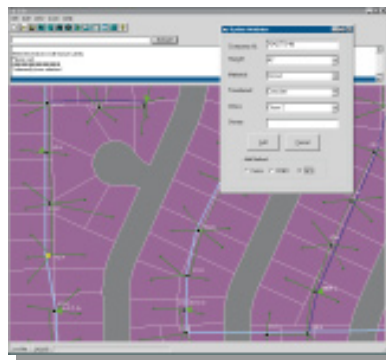
### Improved Performance and Data Management

ARC/INFO Version 7.1.1 features improved performance of ArcStorm™, along with several dozen new functions.

Additional features include

- Optional read locks
- New tools for feature updating
- MULTISELECT command

The new MULTISELECT command allows the user to indicate a group of features across coverages for checkout from ArcStorm (or coverages/libraries) and for editing in ARCEDIT™ software. The speed of selection and following checkout features has been dramatically accelerated.



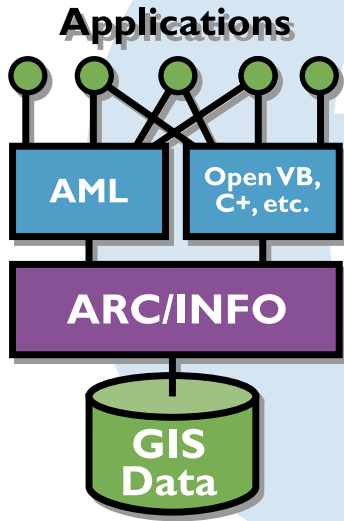
### A Developer's Dream

The application programming interface (API) will be the highlight of Version 7.1.2, when ARC/INFO software's underlying functionality will be available as callable components! Users and developers will have

# a World of Information

unprecedented access to build custom applications for map display, editing, and analysis with custom toolbars and dialog boxes. For example, on the

Windows NT platform, ARC/INFO OCXs can be combined with other custom controls such as MapObjects™ software to produce a quick viewing application that calls ARC/INFO analysis (or AMLs) when needed. And all applications built with the new API will run significantly faster!



## Looking Ahead to Component Architecture

ARC/INFO software's direction toward component-based modules will give new meaning to metaphors such as drag and drop, when users can drag an object such as a coverage onto a workspace, select a query method, and place the resulting object in a window for display. Editing will also take on a new look. Instead of editing single

geographic features like points, lines, and polygons, users will edit "GeoObjects," which represents real-world objects like parcels and utility lines.

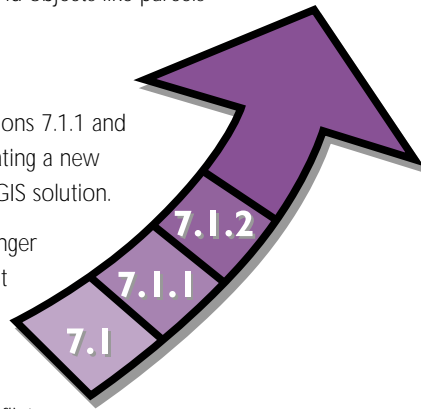
## The Best Keeps Getting Better

At the engineering level, ARC/INFO Versions 7.1.1 and 7.1.2 are major evolutionary steps in creating a new architecture for ESRI's professional-level GIS solution.

In coming releases, users can expect stronger support for industry-standard development environments, drag and drop, object technology, and new data storage paradigms. Also, upcoming releases will include support for long transactions, conflict resolution, and versioning, crucial for multiple user environments. And for the first time, data sets will store their own metadata detailing significant information.

## Open Your Organization to ARC/INFO GIS

ARC/INFO software's open standards, client/server computing, integrated data access, and open development environment give users more opportunities to choose technical alternatives and preserve investments in data and expertise. Open your organization to the power of ARC/INFO GIS.



## Open

### OPEN PLATFORM SUPPORT

ARC/INFO is hardware independent, giving users a number of choices when selecting their hardware platform. ARC/INFO operates in UNIX and Windows NT workstation environments.

### UNIX

- Data General AViiON® (88K)
- Digital™ UNIX Alpha
- HP® 9000/700 & 8x7
- IBM® RS/6000™
- NEC
- SiliconGraphics®
- Sun Solaris® 1
- Sun Solaris 2

### Windows NT

- DEC™ Alpha™
- Intel®

## Open

### OPEN DATA SUPPORT

ARC/INFO supports more than 40 standard raster, vector, and tabular database formats including CAD and graphic files.





For more than 25 years ESRI has been helping people manage and analyze geographic information. ESRI offers a framework for implementing GIS in any organization with a seamless link from personal GIS on the desktop to enterprisewide GIS client/server and data management systems. ESRI GIS solutions are flexible and can be customized to meet the needs of our users. ESRI is a full-service GIS company ready to help you begin, grow, and build success with GIS.

### Corporate

ESRI  
380 New York Street  
Redlands, California  
92373-8100 USA  
Telephone: 909-793-2853  
Fax: 909-793-5953

For more information on  
ARC/INFO, call ESRI at

**1-800-447-9778**  
(1-800-GIS-XPRT)

Outside the United States,  
contact your local ESRI distributor.  
For the number of your distributor,  
call ESRI at

**909-793-2853, ext.1-1235**

Send E-mail inquiries to  
[info@esri.com](mailto:info@esri.com)

Visit ESRI's home page at  
[www.esri.com](http://www.esri.com)

### Regional

Alaska  
907-344-6613

Boston  
508-777-4543

California  
909-793-2853,  
ext. 1-1906

Charlotte  
704-541-9810

Denver  
303-449-7779

Minneapolis  
612-454-0600

Olympia  
360-754-4727

San Antonio  
210-340-5762

St. Louis  
314-949-6620

Washington, D.C.  
703-506-9515

### International

Australia  
61-9-242-1005

Canada  
416-441-6035

France  
33-1-46-23-6060

Germany  
49-8166-380

Italy  
39-6-406-961

Poland  
48-22-25-6482

South Asia  
65-735-8755

Spain  
341-559-4375

Sweden  
46-23-84094

Thailand  
66-2-678-0707

United Kingdom  
44-1923-210450

Venezuela  
58-2-954-1060

